

The recovery package and the labor market

Heather Boushey

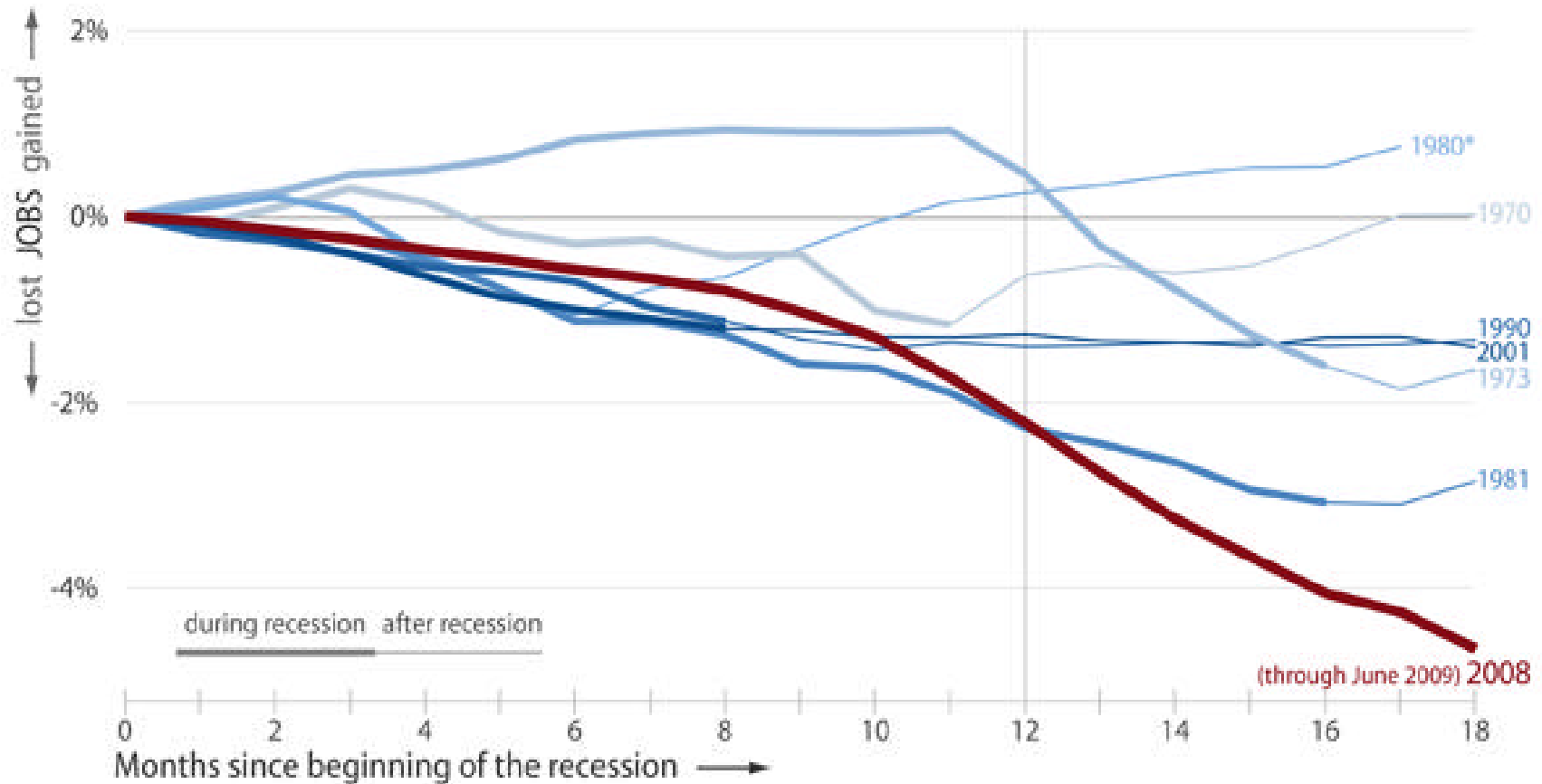
Center for American Progress

July 2009



Jobs Lost or Gained During Recent Recessions

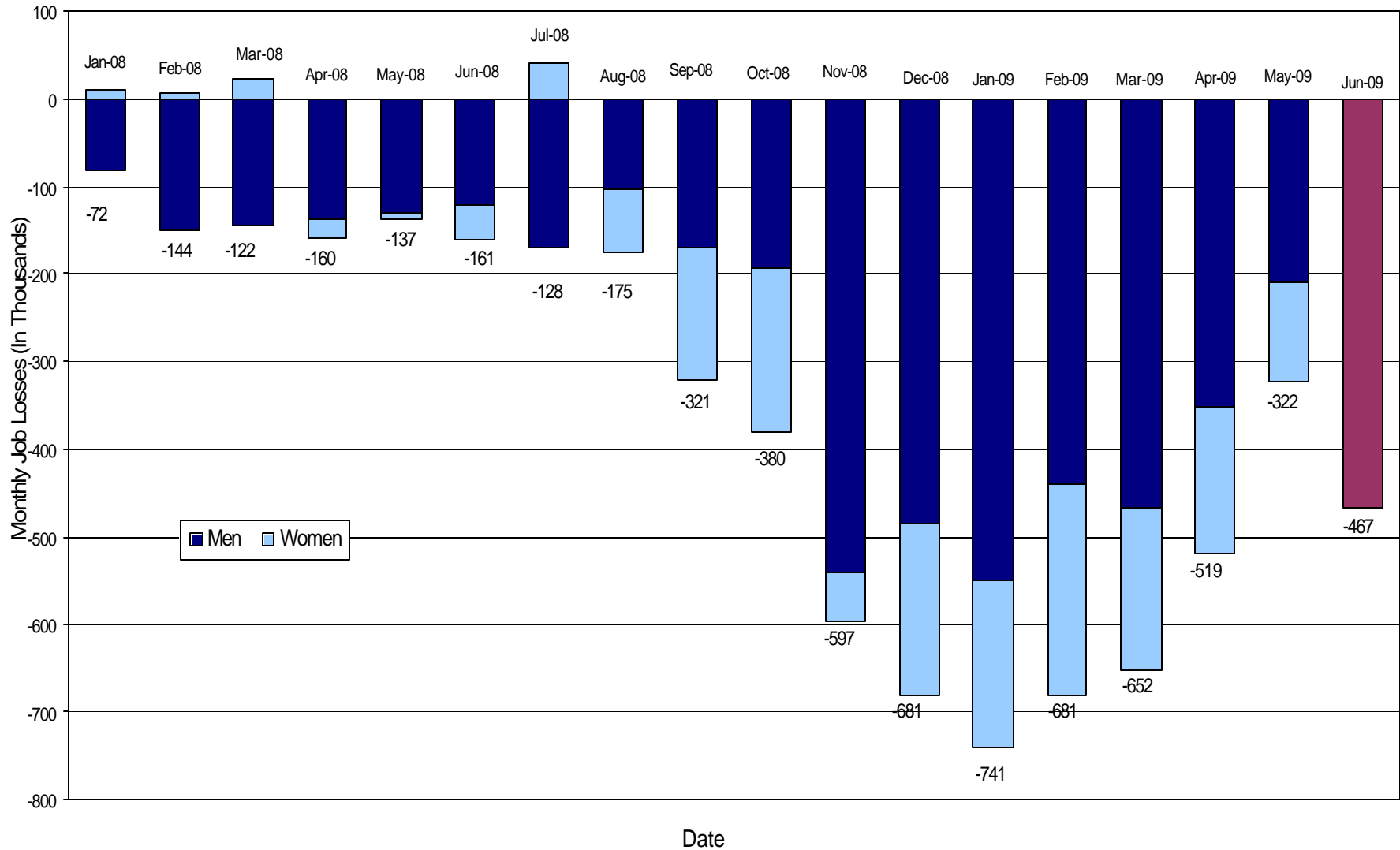
(as a share of total jobs pre-recession)



Sources: Bureau of Labor Statistics, Establishment Survey and National Bureau of Economic Research.

*The line for the 1980 recession ends at 17 months, with the beginning of the 1981 recession.

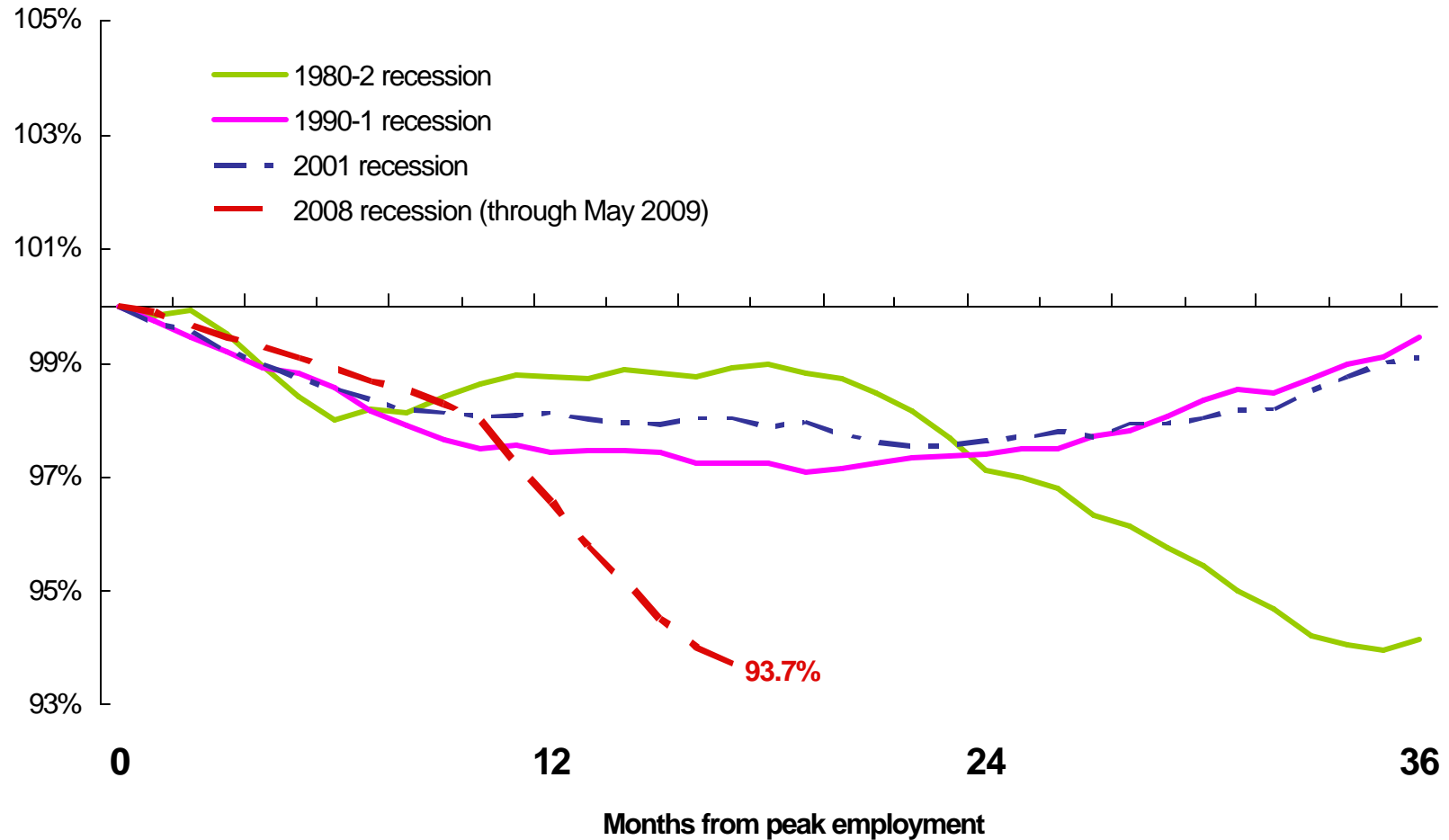
Monthly Non-Farm Job Losses, In Thousands (December 2007 - June 2009)



Sources: Bureau of Labor Statistics, Establishment Survey and National Bureau of Economic Research.



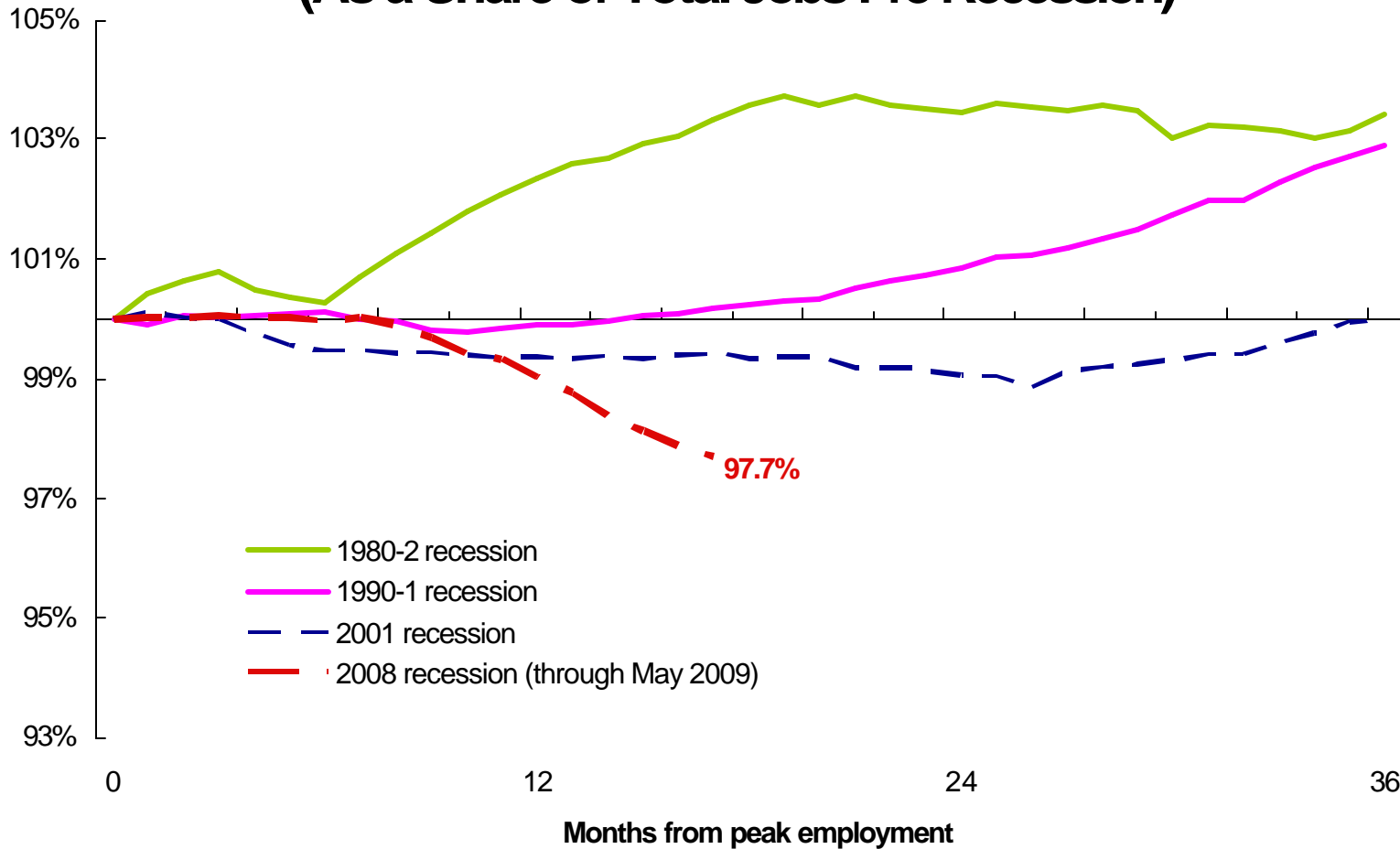
Men Have Lost More Jobs Than in Prior Recessions (As a Share of Total Jobs Pre-Recession)



Sources: Bureau of Labor Statistics, Establishment Survey and National Bureau of Economic Research.

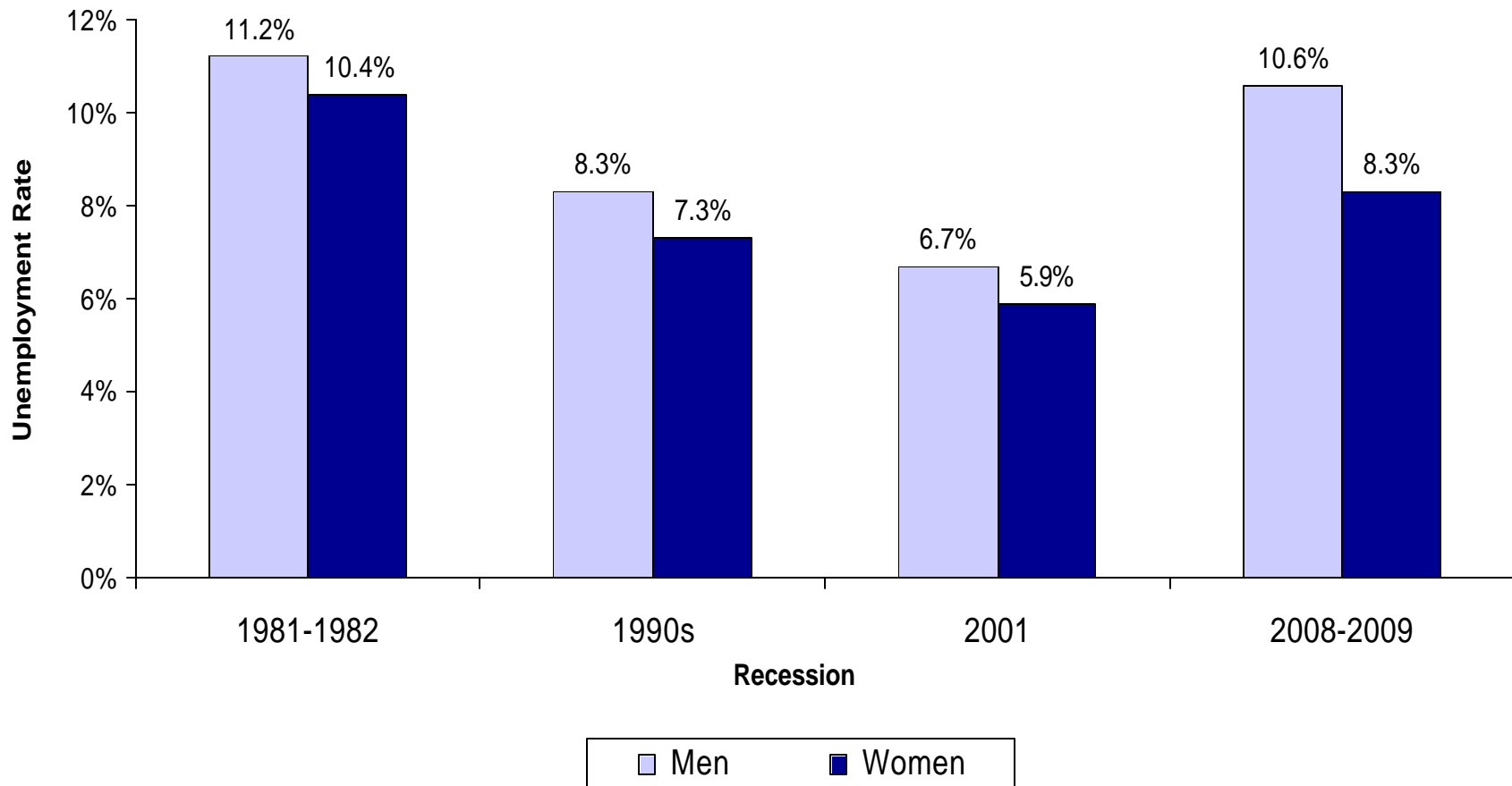


Women Have Lost More Jobs Than in Prior Recessions (As a Share of Total Jobs Pre-Recession)



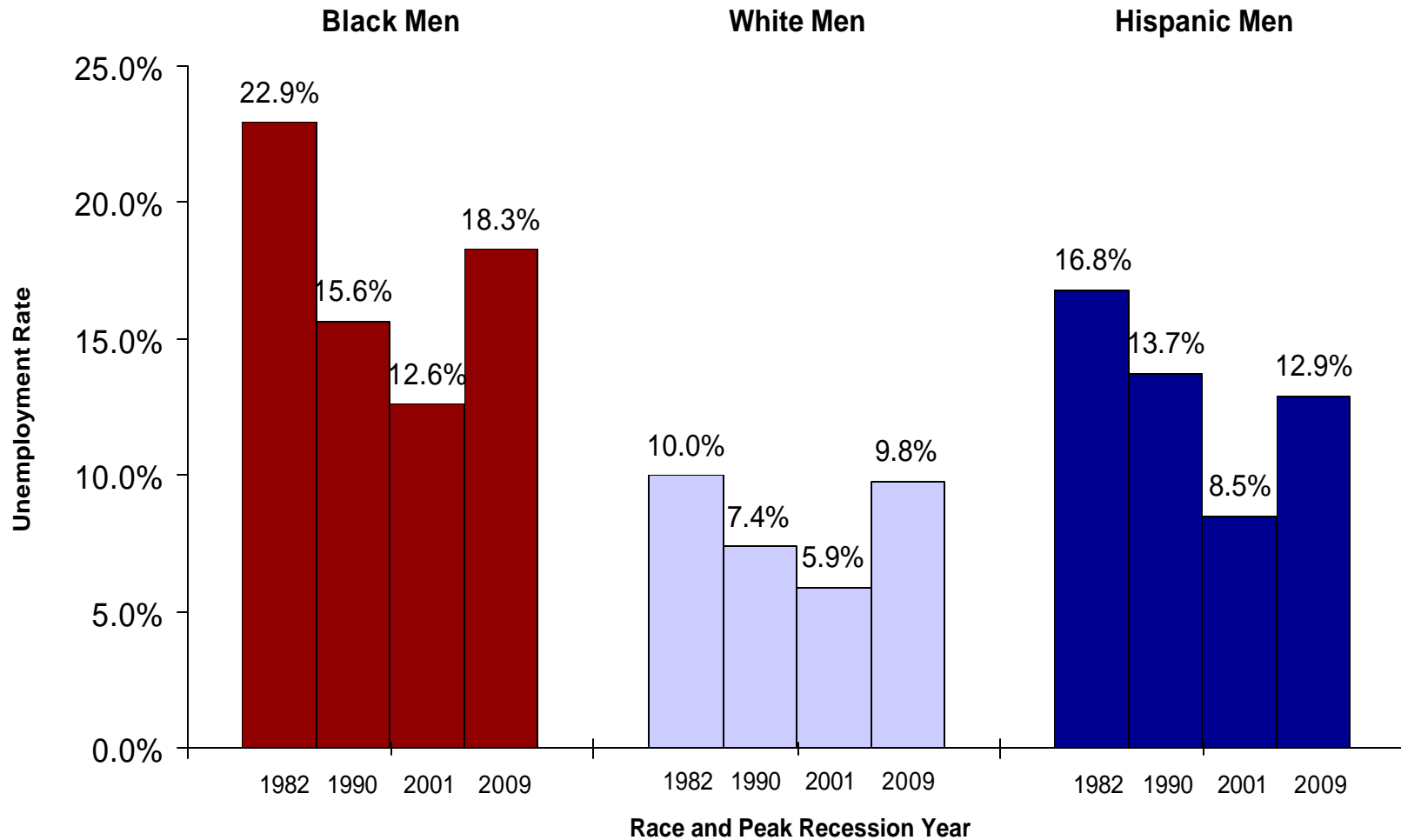
Sources: Bureau of Labor Statistics, Establishment Survey and National Bureau of Economic Research.

Peak Unemployment Rates by Gender (Aged 16 and Over) During Recessions 1981 - 2009



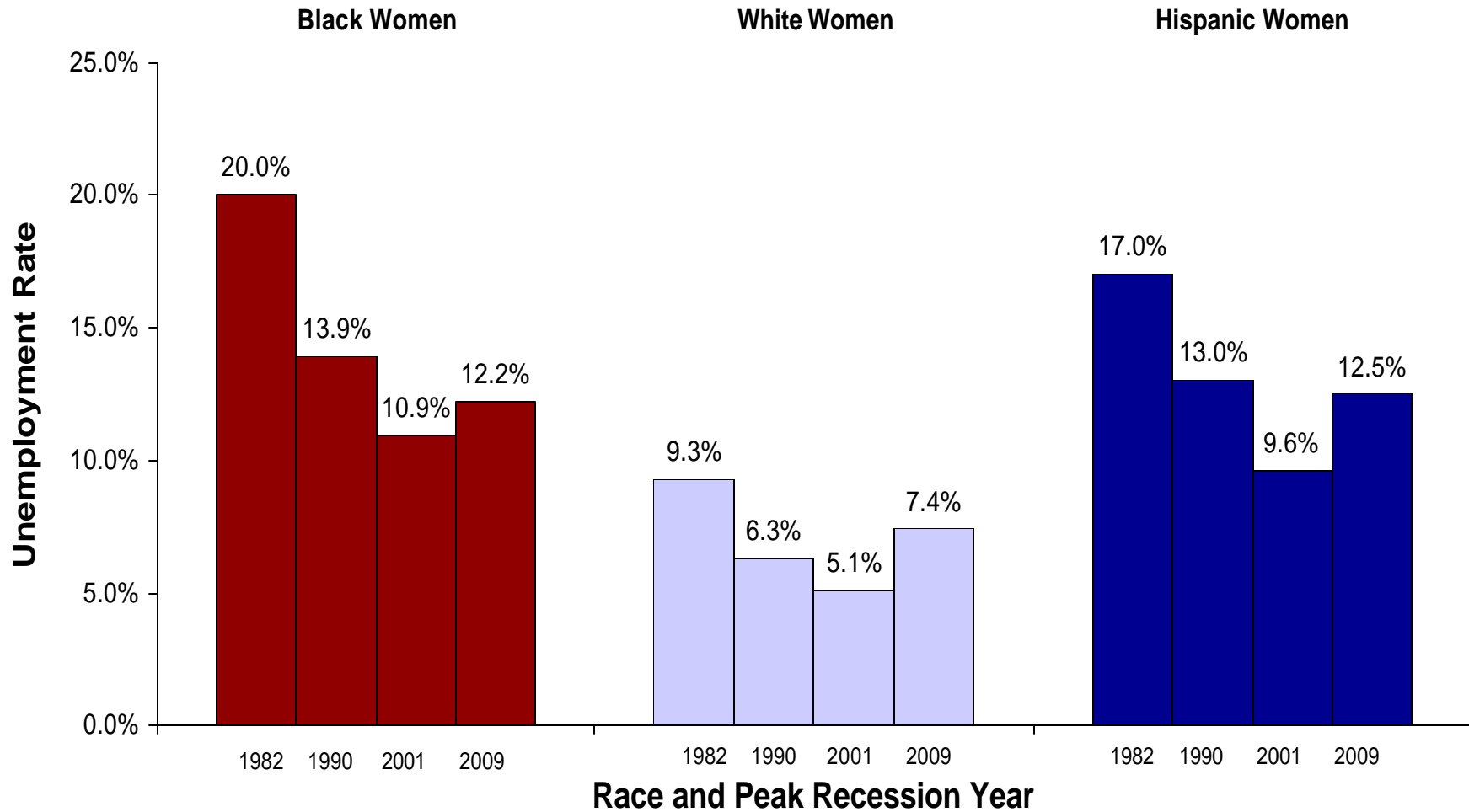
Sources: Bureau of Labor Statistics, Establishment Survey and National Bureau of Economic Research.

Peak Unemployment Rates by Race for Men During Recessions 1981 - 2009



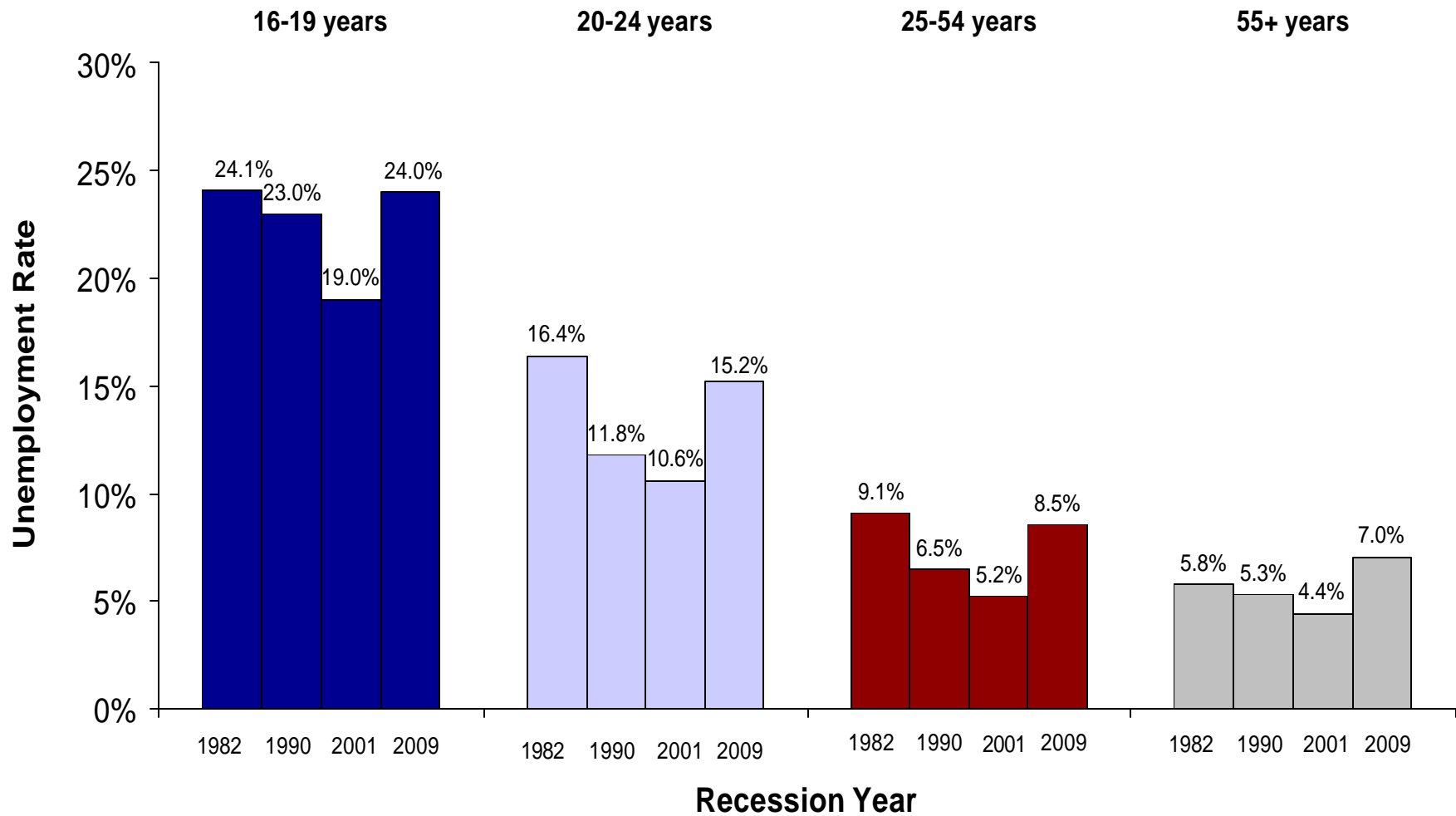
Note: All data for ages 16 and over, and for Hispanic men and women, historical unemployment data by gender is not seasonally adjusted
Sources: Bureau of Labor Statistics, Establishment Survey and National Bureau of Economic Research.

Peak Unemployment Rates by Race for Women During Recessions 1981 - 2009



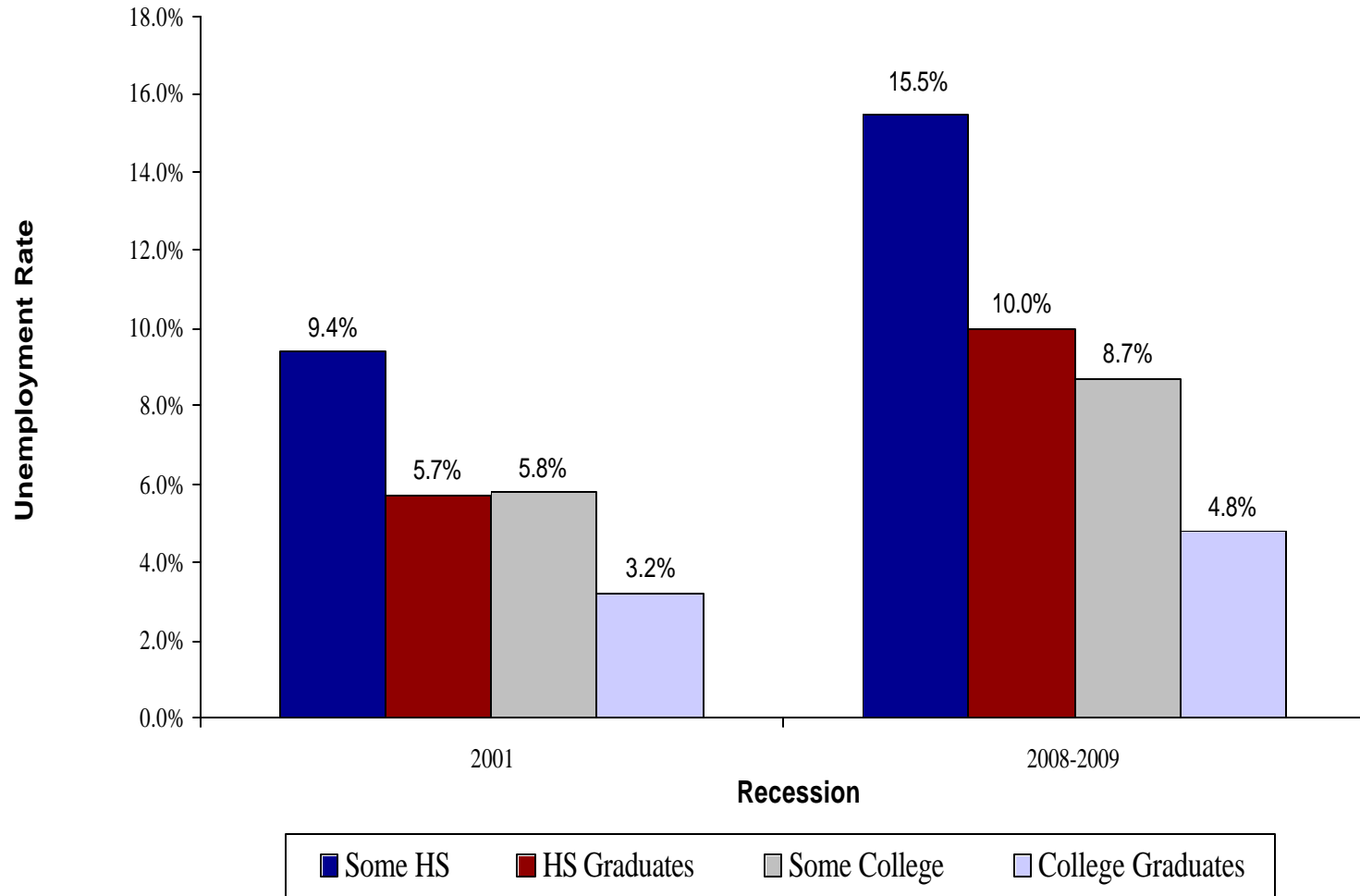
Note: All data for ages 16 and over, and for Hispanic men and women, historical unemployment data by gender is not seasonally adjusted
Sources: Bureau of Labor Statistics, Establishment Survey and National Bureau of Economic Research.

Peak Unemployment Rates by Age During Recessions 1981 - 2009



Sources: Bureau of Labor Statistics, Establishment Survey and National Bureau of Economic Research.

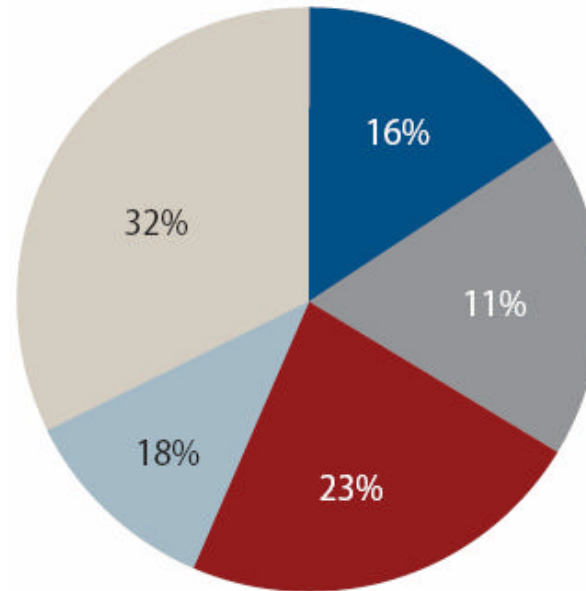
Peak Unemployment Rates by Education Attainment During Recessions 2001 - 2009



Sources: Bureau of Labor Statistics, Establishment Survey and National Bureau of Economic Research.

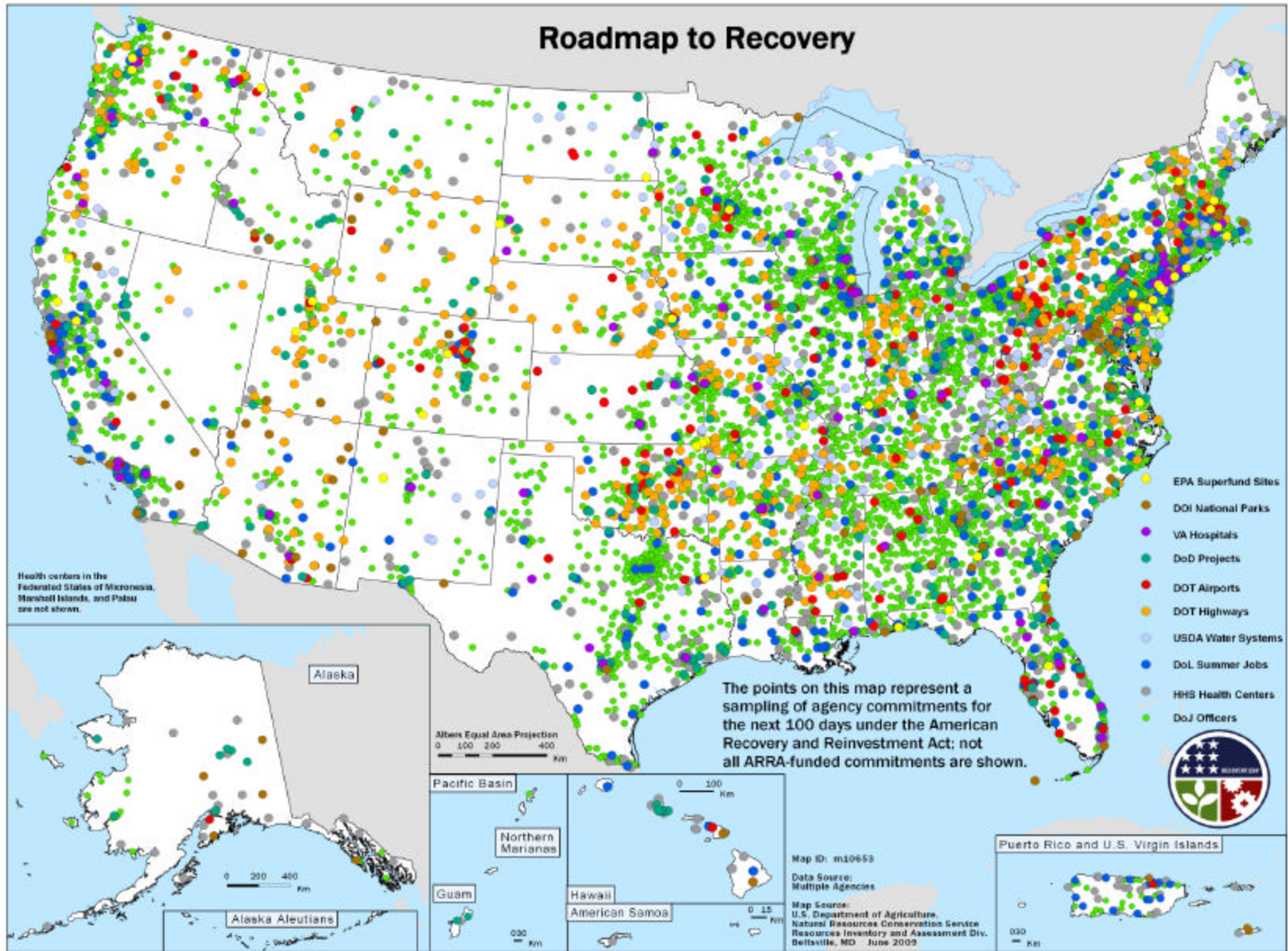


Funding Allocations in the American Recovery and Reinvestment Act



- Help for those most in need
- Aid for states and localities
- Investments: Transportation, utility, health care, education, broadband, etc.
- Green investments
- Tax cuts

Source: CAP Analysis



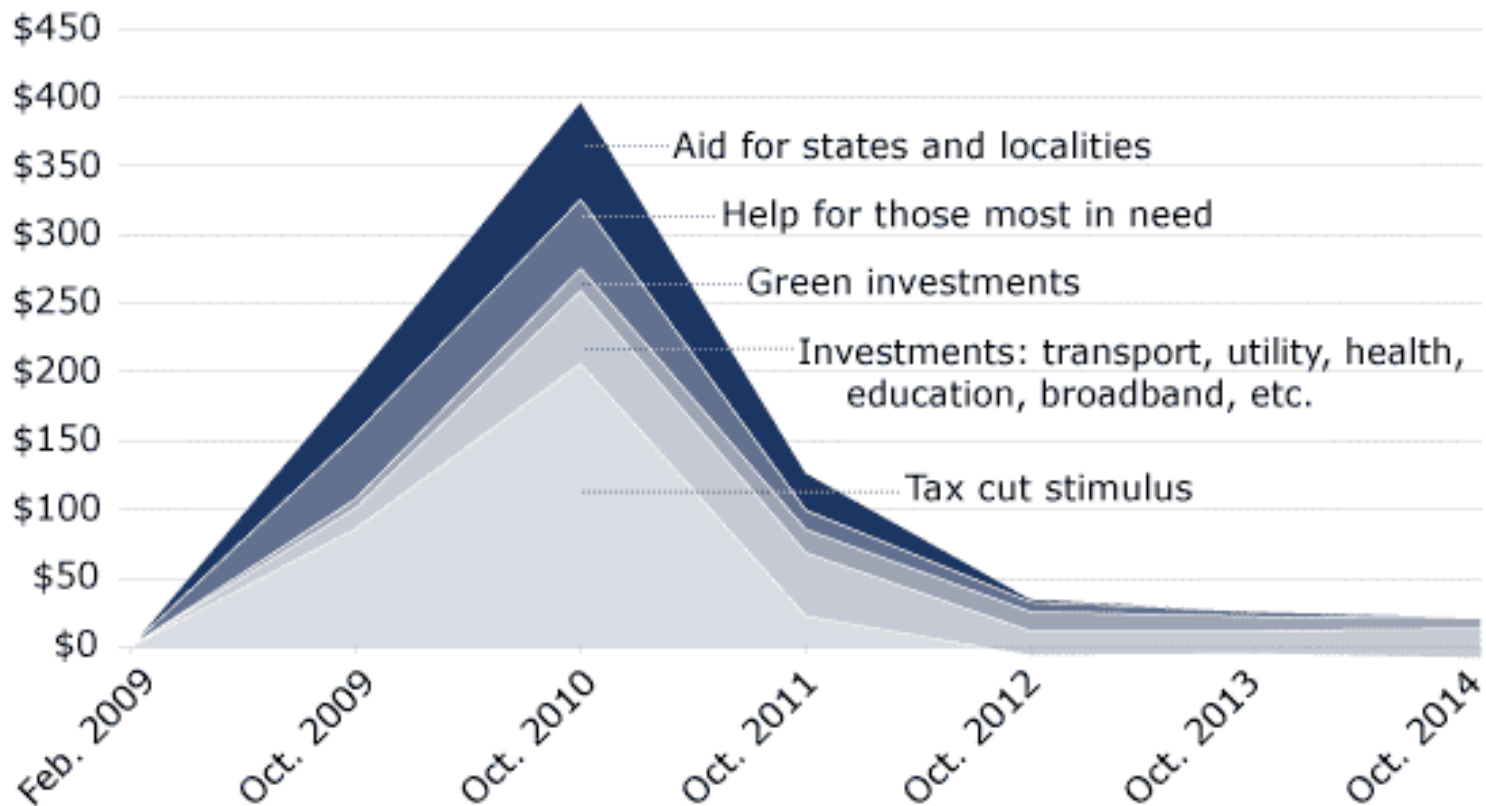
Source: Graph from June 8, 2009 White House presentation by Jared Bernstein, found at: <http://whitehouse.gov/files/documents/recovery/MapsPowerPointPresentation.pptx>



Fast Action

The recovery bill is bringing fast and responsible help to the economy

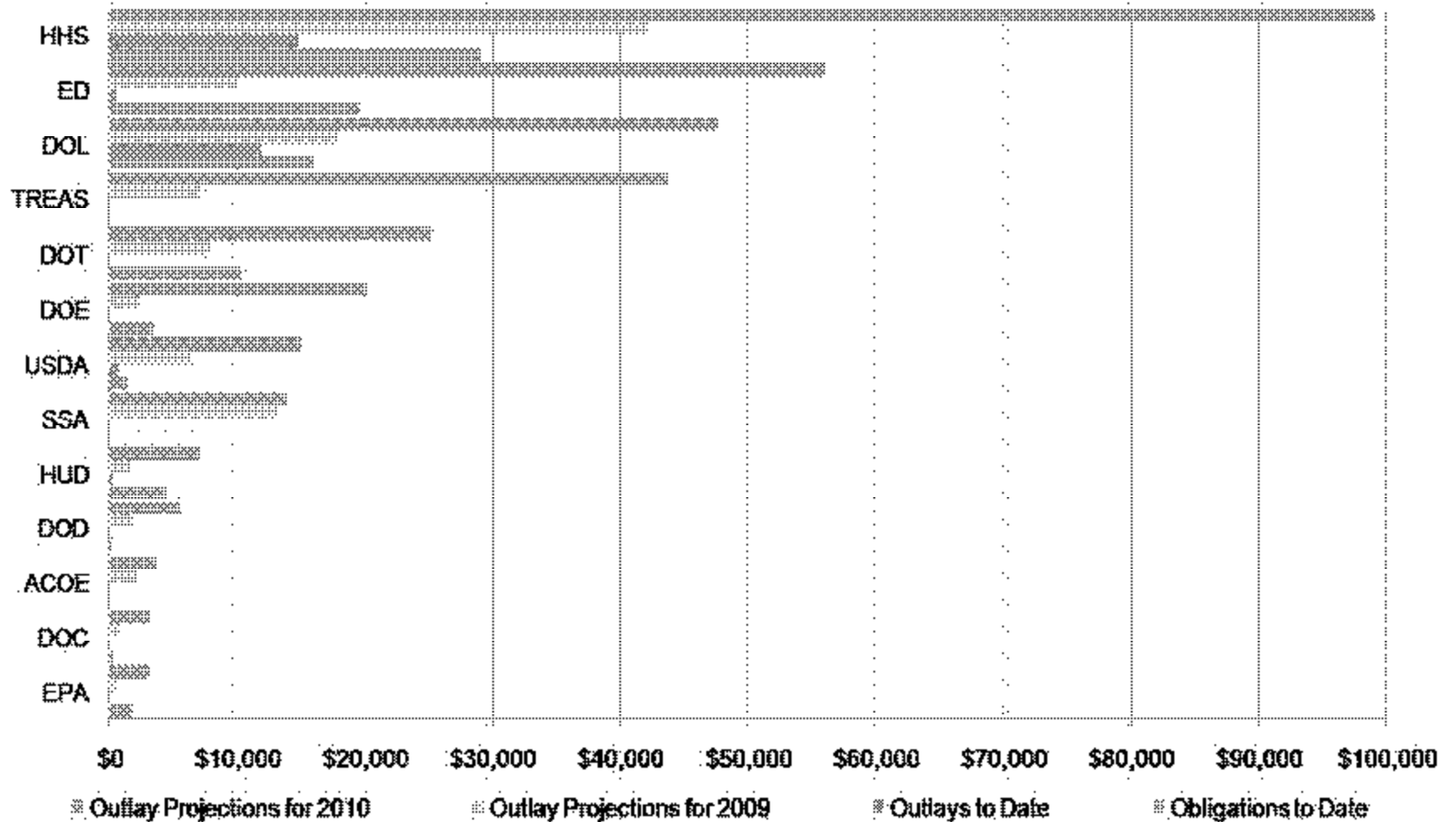
Billions of dollars



Source: Congressional Budget Office; Joint Committee on Taxation, calculated by each fiscal year beginning October 1st.



Outlay and Obligation Totals for Top Agencies



Dollars in Millions

Source: Graph from Final Q1 2009 ARRA Report at Recovery.gov

Data from Weekly Financial & Activity Reports through 5/5/09; President's FY 2010 Budget