

# The 2017 Poverty Snapshot

## Arizona

### Too many Arizonans are still experiencing economic hardship

More than **1 million** Arizonans lived in poverty in 2017

That is

**14.9%**

of Arizona's population



rank

**12th**

in percent of poor people among all states

### Children and people with disabilities remain very vulnerable

**18.4%** of people with disabilities in Arizona lived in poverty in 2017



**20.8%** of AZ children lived in poverty in 2017



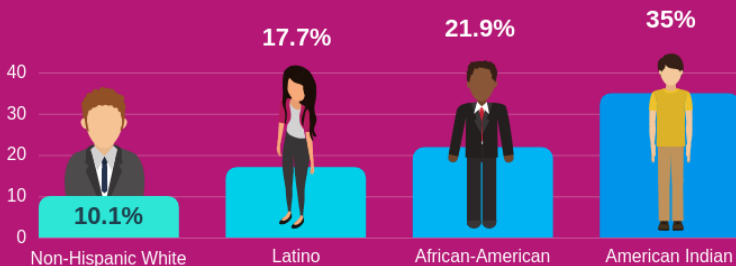
AZ ranks

**15th**

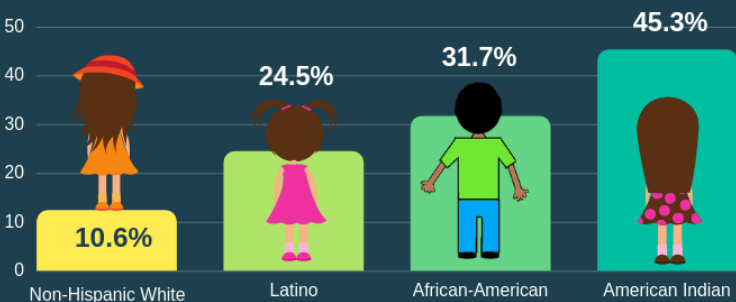
in child poverty rate

### Communities of Color in Arizona Are Disproportionately Poor

Breakdown of poverty rate by race/ethnicity in 2017



Breakdown of child poverty rate by race/ethnicity in 2017



# Near and Deep Poverty in **Arizona**

**200% Poverty Line:**  
**Near-poor**



**50% Poverty Line:**  
**Deep Poverty**

**100% Poverty Line**

**63%** of households earning less than \$20K/year paid more than half of income on rent

Over **468,000** Arizonans lived in deep poverty in 2017

## **Working Hard**

Struggling folks are working:  
In fact, in **63.4%** of poor families, one or more people worked at least part-time or part of 2017



*yet still*

## **Food Insecure**

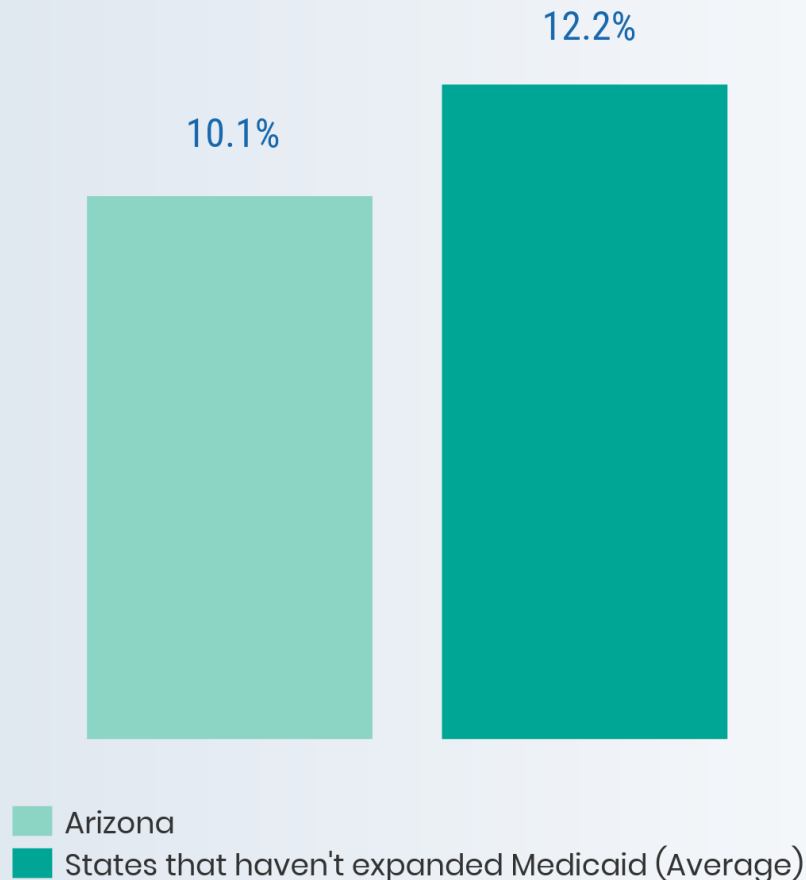
Working, however is often not enough. About **13.1%** of AZ households could not always afford enough food.



Source: U.S. Census Bureau, American Community Survey, 2017

# Arizona Has Fewer Uninsured Because It Expanded Medicaid

Percentage of people uninsured in 2017

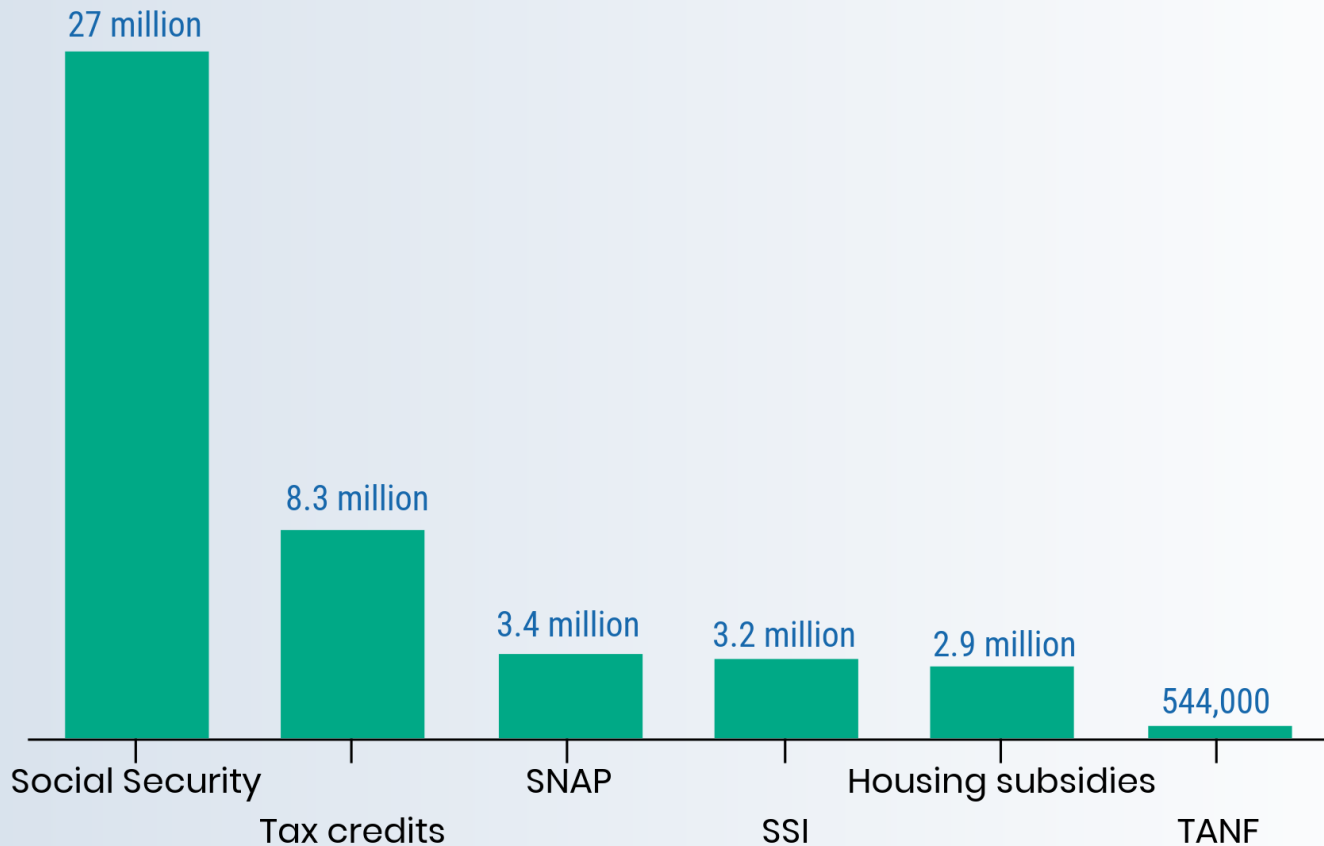


COALITION ON HUMAN NEEDS

Medicaid expansion: The Affordable Care Act allows states to expand Medicaid eligibility to uninsured adults and children whose incomes are at or below 138% of the federal poverty level  
Source: U.S. Census Bureau, American Community Survey, 2017

# Federal Low-Income Programs Lift Millions Out of Poverty

Numbers of people lifted above poverty line in 2017



COALITION ON HUMAN NEEDS

- Refundable tax credits: Earn Income Tax Credit and refundable portion of Child Tax Credit
- SNAP: Supplemental Nutrition Assistance Program
- Housing subsidies: Public housing and tenant vouchers
- SSI: Social Security Insurance
- TANF: Temporary Assistance for Needy Families

Source: U.S. Census Bureau, Supplemental Poverty Measure, 2017